


Sebastian Elementary



3rd Grade FSA Parent Info Night March 16th 2020



What is the FSA?

- The Florida Standards Assessments is a suite of reading and math tests designed to measure student performance. The test is tied to Florida's Common Core-based standards, which outline what students should know at the end of each grade.

How long is the FSA test?

All FSA ELA Reading and FSA Math assessments are administered over two days.

- Test session lengths are as follows:
 - ELA Reading
 - Grades 3-5: Two 80-minute sessions
 - Mathematics
 - Grades 3–5: Two 80-minute sessions

When is the FSA ELA Reading and Math Assessment?

- Indian River County School District has designated April 1st and 2nd as the 2 days in which the 3rd Grade FSA Reading assessment will be administered.
- Indian River County School District has designated May 6th and 7th as the 2 days in which the 3rd Grade Math assessment will be administered.

Can you opt out of FSA?

- The Florida Department of Education says state law makes taking part in testing mandatory, so there is no legal way to opt out
- If you however choose to opt out your child will be retained and repeat 3rd grade the following schoolyear.

What is the passing score for 3rd grade FSA ELA?

- A score of a Level 3 is passing for 3rd grade. A score of a **level 2** on the 3rd grade FSA ELA Reading test is **sufficient for promotion purposes**.
- The table below shows the score ranges for each achievement level on the FSA score scale. Students in grade 3 must achieve a Level 2 or higher on the Grade 3 FSA ELA Reading assessment for promotion purposes.

Table 1. Achievement Levels

Level 1	Level 2	Level 3	Level 4	Level 5
Inadequate: Highly likely to need substantial support for the next grade	Below Satisfactory: Likely to need substantial support for the next grade	Satisfactory: May need additional support for the next grade	Proficient: Likely to excel in the next grade	Mastery: Highly likely to excel in the next grade

When will the 3rd grade FSA ELA testing results be released?

- We are being told no earlier than May 31st.

What if my child does not pass the 3rd Grade FSA ELA Reading test?

- If by chance your child does hit the Level 2 achievement level to be promoted to 4th grade there are a handful of options for remediation and reassessment.
1. Late April early May the final iReady Reading Diagnostic will be administered.
 - A score of a 535 or higher will supersede a insufficient FSA score (1) and result in promotion to 4th grade.
 2. The district offers summer school for 3rd grade retained students.
 - At the end of the summer school students will take the SAT10
 - If unsuccessful on the SAT 10 students will be given another opportunity via an iReady Reading diagnostic in which they will need to score a 535.

3rd Grade Math

FSA

Types of questions

3rd grade

Paper-Based Item Types – Mathematics

1. **Multiple Choice** – The student is directed to select the one correct response from among four options.
2. **Multiselect** – The student is directed to select all of the correct answers from among a number of options. These items are different from Multiple Choice items, which prompt the student to select only one correct answer.
3. **Editing Task Choice** – The student fills in a bubble to indicate the correct number, word, or phrase that should replace a blank or a highlighted number, word, or phrase.
4. **Selectable Hot Text** – Excerpted sentences from the text are presented in this item type. The student fills in bubbles to indicate which sentences are correct.
5. **Equation Editor** – The student fills in bubbles indicating numbers and mathematical symbols to create a response. Students respond in response grids in which they write their answer in the boxes at the top of the grid, then fill in the corresponding bubble underneath each box.
6. **Matching Item** – This item type presents options in columns and rows. The student is directed to fill in a bubble that matches a correct option from a column with a correct option from a row.

Sample Editing Task Choice

5. Kaiya and Deangelo each create a number pattern.

- Kaiya's pattern uses the rule "Add 2" and has a first term of 6.
- Deangelo's pattern uses the rule "Add 4" and has a first term of 5.

Complete the statement that describes the relationship between the two number patterns. For each blank, fill in the circle **before** the word or phrase that is correct.

The two patterns

<input type="radio"/> (A) have
<input type="radio"/> (B) do not have

 terms in common because

Kaiya's pattern has

<input type="radio"/> (A) only odd
<input type="radio"/> (B) only even
<input type="radio"/> (C) both odd and even

 numbers and

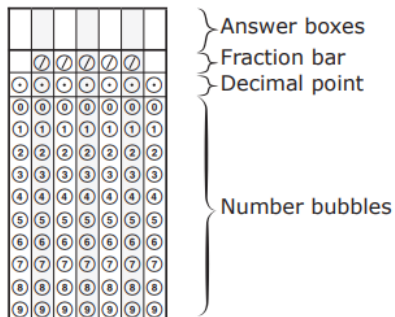
Deangelo's pattern has

<input type="radio"/> (A) only odd
<input type="radio"/> (B) only even
<input type="radio"/> (C) both odd and even

 numbers.



1. Work the problem and find an answer.
2. Write your answer in the answer boxes at the top of the grid.
 - Write your answer with the first digit in the left answer box DR with the last digit in the right answer box.
 - Write only one digit or symbol in each answer box. Do NOT leave a blank answer box in the middle of an answer.
 - Be sure to write a decimal point or fraction bar in the answer box if it is a part of the answer.
3. Fill in a bubble under each box in which you wrote your answer.
 - Fill in one and ONLY one bubble for each answer box. Do NOT fill in a bubble under an unused answer box.
 - Fill in each bubble by making a solid mark that completely fills the circle.
 - You MUST fill in the bubbles accurately to receive credit for your answer.



Change the mixed number to an equivalent fraction, such as $\frac{53}{4}$, or to an equivalent decimal, such as 13.25. Do not try to fill in $13\frac{1}{4}$, as it would be read as $\frac{131}{4}$ and would be counted wrong.

CORRECT

5	3	/	4			
0	0	0	0	0	0	0
1	1	1	1	1	1	1
2	2	2	2	2	2	2
3		3	3	3	3	3
4	4	4		4	4	4
	5	5	5	5	5	5
6	6	6	6	6	6	6
7	7	7	7	7	7	7
8	8	8	8	8	8	8
9	9	9	9	9	9	9

OR

INCORRECT

Sample Equation Editor: Answer Grids

- 7.** The perimeter of a rectangular field is 74 yards. The length of the field is 27 yards.

What is the width, in yards, of the field?

	/	/	/	/	/	
0	0	0	0	0	0	0
1	1	1	1	1	1	1
2	2	2	2	2	2	2
3	3	3	3	3	3	3
4	4	4	4	4	4	4
5	5	5	5	5	5	5
6	6	6	6	6	6	6
7	7	7	7	7	7	7
8	8	8	8	8	8	8
9	9	9	9	9	9	9



Sample Multiple Choice

1. What is the value of the unknown number in the equation $6 \times 3 = \square$?

(A) 3

(B) 9

(C) 18

(D) 63

Sample Matching Item

3. Match each number to the value of the number rounded to the nearest 10.

	180	190	200
181	(A)	(B)	(C)
186	(D)	(E)	(F)
194	(G)	(H)	(I)



Sample Multiselect

Select all the situations that can be represented by $35 \div 5$.

- Ⓐ Heidi has 35 apples after picking the same number of apples each day for 5 days.
- Ⓑ Heidi has 35 apples and places an equal number of apples into 5 baskets.
- Ⓒ Heidi has 5 apples and needs more apples to deliver to a customer.
- Ⓓ Heidi has 35 apples, and her friend gives her 5 more.
- Ⓔ Heidi has 35 apples and gives 5 of them to a friend.



3rd grade ELA

Reading Selections

- Length of passages will be from 100 – 700 words.
- A variety of question types will be asked.

Editing Task Choice

If he worked hard, he knew he could learn all of the words.

- Ⓐ word's
- Ⓑ words'
- Ⓒ wordes
- Ⓓ correct as is

Selectable Text

Fill in the circle **before** the sentence from Passage 2 that shows why the man believes that his cheeses can bring themselves to the market.

- 14 Ⓐ THERE was a man of Gotham who filled a sack with cheeses and started off for Nottingham market to sell them. Ⓑ He carried the sack on his back, and when he became tired he sat down by the wayside to rest. Ⓒ Thus he went on until he reached the summit of the last hill he had to climb before he came to Nottingham bridge.
- 15 Ⓓ There he rested, and when he rose to continue his journey a cheese slipped out of the sack and rolled down the hill toward the bridge.

Multiselect

14. Select **two** reasons the author included paragraph 11 in Passage 2.

- Ⓐ to compare leaf-cutting ants to human farmers
- Ⓑ to describe how leaf-cutting ants grow their food
- Ⓒ to explain how leaf-cutting ants solve farming problems
- Ⓓ to show that the topic of the passage is leaf-cutting ants
- Ⓔ to describe the effect that leaf-cutting ants have on ordinary farms

Evidence-Based Selected Response

10. This question has two parts. First, answer Part A. Then, answer Part B.

Part A

Based on the information in Passage 1, with which statement would the author agree?

- Ⓐ Rafts are too small to fit all of the ants from a colony.
- Ⓑ Smaller colonies may not live through a flood.
- Ⓒ The ants may not survive the journey without food.
- Ⓓ Building a raft is a clever way for the ants to survive.

Part B

Which piece of evidence from Passage 1 supports your answer in Part A?

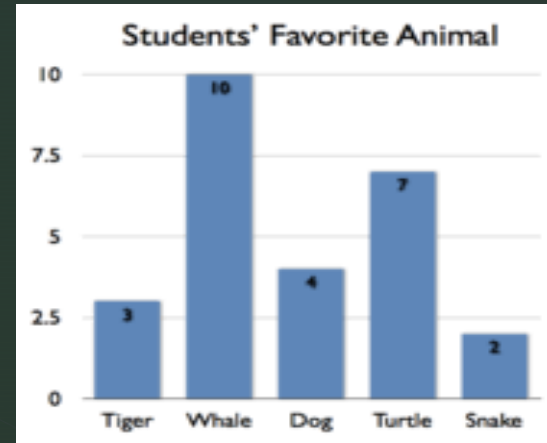
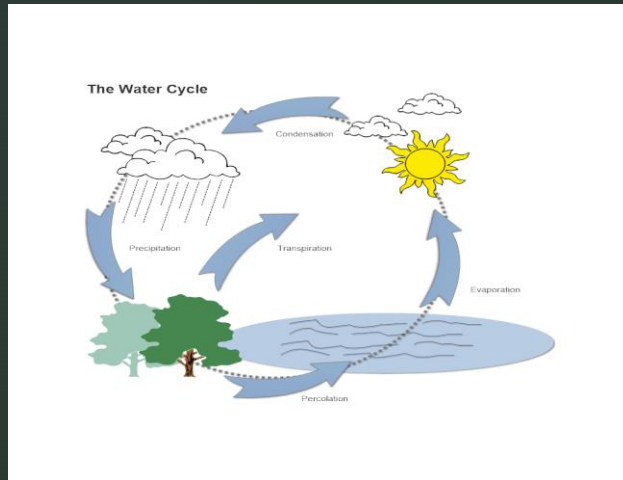
- Ⓐ "What a tangle of ants! But it's just what the ants need to save their colony from drowning." (paragraph 3)
- Ⓑ "Once the raft is in place, one by one and two by two, more ants march out of the nest and onto the ant raft." (paragraph 4)
- Ⓒ "They carry ant eggs, ant babies, and, of course, the queen. (Some ants may even pack a bit of food for the trip.)" (paragraph 4)
- Ⓓ "An average-sized nest is made up of 100,000 fire ants." (paragraph 5)

Table Match

Fill in the circles to show the order of steps ants take to leave their homes during a flood in Passage 1.

	First	Next	Finally
They build a new nest.	(A)	(B)	(C)
They move food and each other.	(D)	(E)	(F)
They stick their bodies together.	(G)	(H)	(I)

Multimedia



Which paragraph is **best** supported by the picture at the beginning of the passage?

- A. paragraph 2
- B. paragraph 3
- C. paragraph 4
- D. paragraph 5

